



# GLOBAL-TEK DOOR TYPE DISH WASHER GT-D1

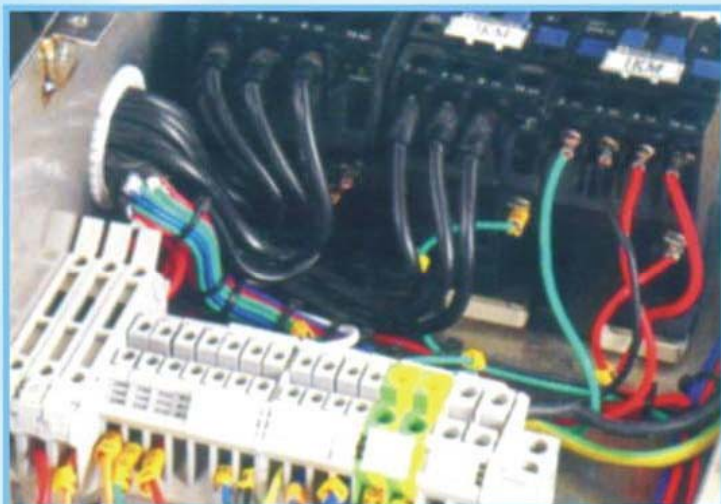
## SAFE & EASY OPERATION

- Maximum Wash Height 42cm,
- Max Wash Rate 60 Racks per Hour
- User Friendly Control Panel
- Selectable Wash Cycle of 60 , 90, 120 Seconds
- “Beep” Sound Signals End of Cycle
- Digital Temperature Display
- Built-in Detergent and Rinse Additive Injection Point



## ASSURANCE ON CLEANING & SANITIZING RESULTS

- Powerful Rinse Motor Ensures Excellent Rinsing Effect
- Special Designed Wash and Rinse Jets
- Stainless Steel Wash and Rinse Arms Provide Full Coverage of Wash and Rinse Effect
- 3 Kw Wash Tank Heater and 7 Kw x 2 Booster Heater Ensure Temperature Consistency





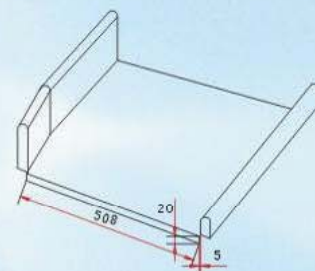
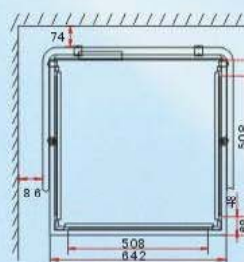
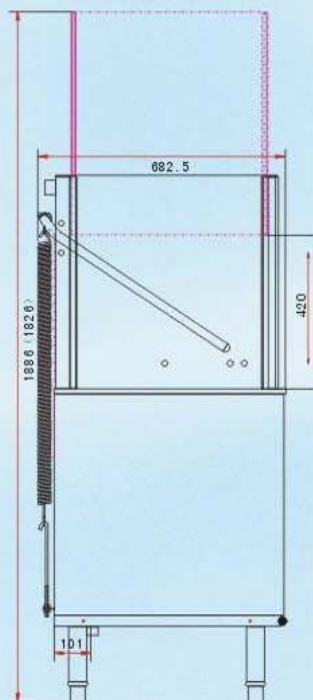
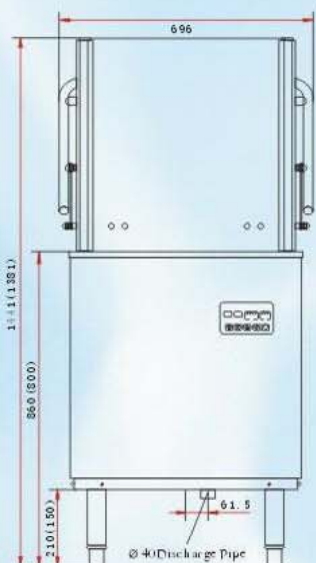
# GLOBAL-TEK DOOR TYPE DISH WASHER GT-D1



## SPECIAL DESIGN & STRUCTURE

- Sus 304 1.5mm Stainless Steel Constructed, Durable and Reliable
- Full Rack Size Provides Higher Cleaning Efficiency
- Micro-Processing Control with Easy Operation Buttons
- Movable Electrical Box for Easy Service and Repair
- “Beep” Sound Signals End of Wash Operation

Dimension (WxDxH) mm	696×693×1440
Selectable Wash Cycle	60/90/120 seconds
Maximum Wash Speed	60 Racks/hour
Maximum Wash Height	420mm
Rack Size	500×500mm
Heating Mode	Electric Heating
Wash Tank Capacity	35 liters
Power Source	20Kw 380V/50Hz /3ph
Power of Wash Pump (HP)	1
Wash Tank Heater (Kw)	3
Booster Heater Capacity	15 liters
Booster Heater (Kw)	7×2
Factory Set Rinse Time	10 seconds
Water Consumption Per Rack	2.5 liters
Max Water Consumption/hr	150 liters
Feed Water Temperature	10-60°C
Inlet Pipe Diameter	19 mm
Discharge Pipe Diameter	40 mm
Net Weight	125 kg



## GLOBALTECH HYGIENE SDN BHD

120, Jalan PP 1/4, Taman Putra Prima, 47100 Puchong, Selangor Malaysia.  
Email: enquiry@global-tek.com.my Website: www.global-tek.com.my